



GOLD

RESIDENCES

SUCAT, PARAÑAQUE CITY

RISE UP TO A NEW GOLD STANDARD



PAINTING THE TOWNSHIP GOLD

An 11.6-hectare master-planned community right across the Ninoy Aquino International Airport, the concept for SMDC's first township is to be the gold standard—a convergence of modernization, dynamism, innovation, and prestige, assured in all its areas.



THERE'S NO PLACE LIKE GOLD

Striking, modern, unparalleled—this is Gold City in a nutshell. The seamless fusion of architecture and luxury creates a dynamic look, making it a cut above the rest. Its fancy aesthetic goes the same with the quality of life it brings, where you can get a golden moment in every corner. Enter doors that will let you live in the finest and work in a prestigious set-up, and get the preview of elegance that awaits to be discovered.

A group of four people in formal attire are shown in a celebratory setting. Three women and one man are dressed in black, sequined or tuxedo-style clothing. They are surrounded by a shower of golden confetti or streamers. The lighting is dramatic, highlighting their faces and the shimmer of their clothes. In the bottom right corner, there is a decorative graphic element consisting of a curved, glowing golden trail of particles.

SHINE JUST LIKE GOLD

Picture yourself waking up to the sunshine through your window—your phone reminds you of your schedule for the day: a meeting before noon, and a cocktail party at one of the city's hottest clubs. Knowing that your office is a stone's throw away from your condo, you take your time and satisfy your cravings at the café downstairs. As the elevator reaches the ground floor, you can't help but admire the marble floors and walls of the lobby, and the flowing water features and lush garden outside. It is simply divine, you say to yourself, as you marvel at the grandeur of Gold City and how it fits the lifestyle that you are looking for.



IN THE MIDDLE OF THE METROPOLITAN

Located in a place where life never stops, Gold City is right across NAIA Terminal 1, allowing for easy access when you step in and out of Manila. It stands out with the golden façade that glistens from a distance, with it not being a far distance to what the city can offer.



Places of Interest:

Shopping Malls:

- SM Mall of Asia (± 3.8 km)
- SM City Sucat (± 2.0 km)
- S&R Paranaque (± 648.8 m)
- Alabang Town Center (± 9.2 km)
- Newport Mall (± 3.0 km)
- Double Dragon Plaza (± 3.4 km)
- MET Live (± 3.6 km)

Schools:

- Manresa School (± 8.0 km)
- San Beda College Alabang (± 8.6 km)
- Nord Anglia International School Manila (± 3.0 km)
- Singapore School Manila (± 2.5 km)
- Manila Tytana Colleges (± 4.0 km)

Hotels:

- Nobu Hotel Manila (± 2.3 km)
- Okada Manila (± 2.3 km)
- Solaire Resorts and Casino (± 3.0 km)
- Sofitel Philippine Plaza (± 6.0 km)
- Conrad Manila (± 3.8 km)
- Marriott Manila (± 2.4 km)
- Sheraton Manila Hotel (± 2.2 km)

Hospitals:

- Philippine General Hospital (± 8 km)
- Makati Medical Center (± 6 km)
- San Juan De Dios Hospital (± 3.6 km)
- The Premier Medical Center (± 2.2 km)
- Olivares General Hospital (± 3.1 km)
- Medical Center Paranaque (± 6.4 km)

Theatre/Arts/Entertainment:

- Cultural Center of the Philippines (± 6.3 km)

- Mall of Asia Arena (± 3.6 km)

Convention Centers:

- World Trade Center (± 5.5 km)
- SMC Convention Center (± 3.8 km)
- Philippine International Convention Center (± 6.0 km)
- One Esplanade (± 4.4 km)

Entertainment Centers:

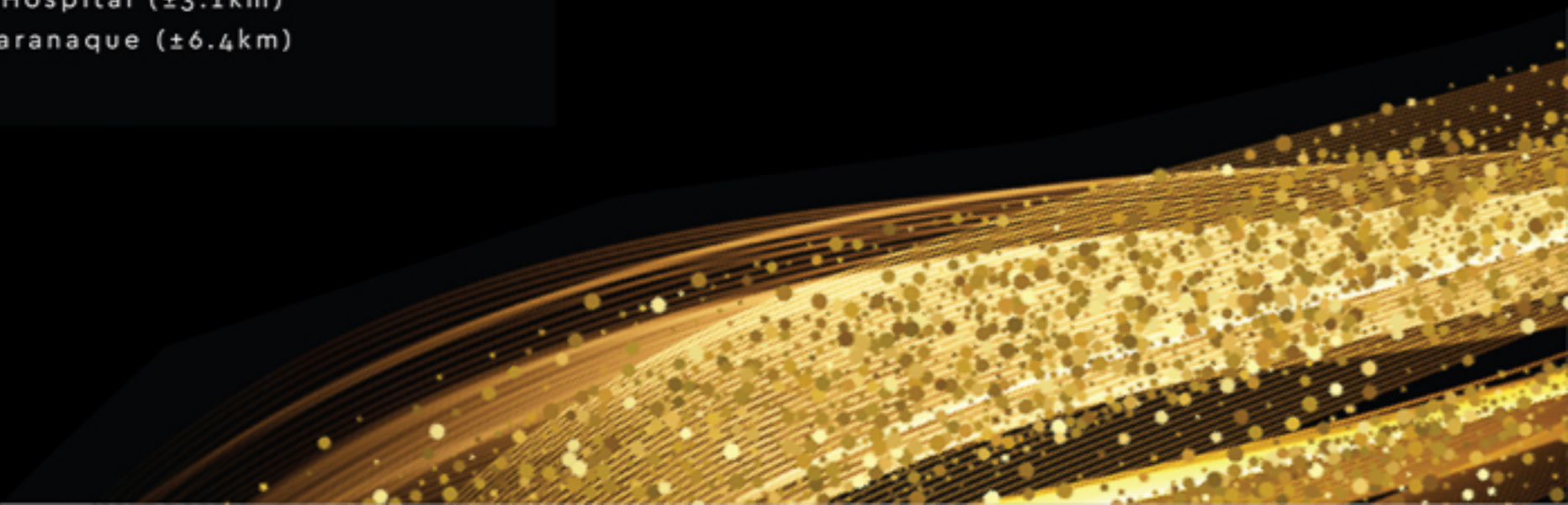
- Star City (± 6.0 km)
- SM by The Bay (± 3.8 km)

Airport:

- NAIA Terminal 1 (± 338.5 m)
- NAIA Terminal 2 (± 1.6 km)
- NAIA Terminal 3 (± 2.3 km)
- NAIA Terminal 4 (± 2.0 km)

Place of Worship:

- The National Shrine of our Mother of Perpetual Help (± 2.8 km)
- Shrine of the Jesus the Way, The Truth and The Life (± 3.3 km)
- Presentation of the Child Jesus Parish Church (± 5.9 km)
- Shrine of St. Therese of the Child Jesus (± 2.2 km)



DOWNTOWN GOLD

Enjoy the beauty of nature and the sparkle of the city lights here at Gold City. The entire development boasts of its iconic architectural design and is thoughtfully planned for you to indulge the first-class life.

List of Amenities :

-  Adult Pool
-  Kid's Wading Pool
-  Kid's PLAYce
-  Fitness Center
-  Social Hall
-  Central Parks
-  Enclave Gardens
-  Jogging Paths
-  Social Lounge



SIGNATURE GOLD

Tired of the usual traffic you experience daily? There's no need to worry about the congested streets anymore. Here, you have full access to a variety of dining, shopping, and entertainment options that you can choose from. With commercial areas nearby, utmost convenience is provided, making everything a breeze.





BASK IN THE GOLDEN HOUR

Soak up in the beauty of what life has to offer as you take a dip in Gold Residences leisure pools. Offering a piece of paradise, one can unwind in the well-designed decks lined in the pool area and immerse themselves in the magnificence of the high-rise towers surrounding it.



TAKE IT EASY

The flourishing landscaped lounged area allows you to do activities and have fun. Sit and relax as you read a book on a bench, go for a stroll in the garden or just wander around—after a busy day of working hard, it's good to slow down and recharge.



STAY ACTIVE IN STYLE

Looking for the latest gym equipment in the neighborhood? Boost your mood and get energized as you utilize the top-tiered facilities at the Fitness Center.

Fitness Center, Artist's Perspective



Function Room, Artist's Perspective

UPGRADE YOUR EVENTS

Throw your most extravagant celebrations and be the best host ever at the property's spacious function rooms elaborated with luxurious designs, where you can allow your guests to party like a star.





**STEP INTO THE
GOLDEN LIFE**

Anticipate a grand welcome and walk the hallways of sophistication at the property's lobby area. The modern interior design is a distinctive taste of quality and class, accented by ornate details that complement the entire space, like the marble tiles, panoramic glass doors, and custom-designed sofas.

Social Hall, Artist's Perspective



MAKE THEM FEEL GRAND

Let your guests feel the grandiosity that you get to experience every day once they enter the property's foyer. While waiting for them or for someone to pick you up, you can also while away your time and be amazed in the designs surrounding the area.

Social Lounge, Artist's Perspective



FIT FOR A KING

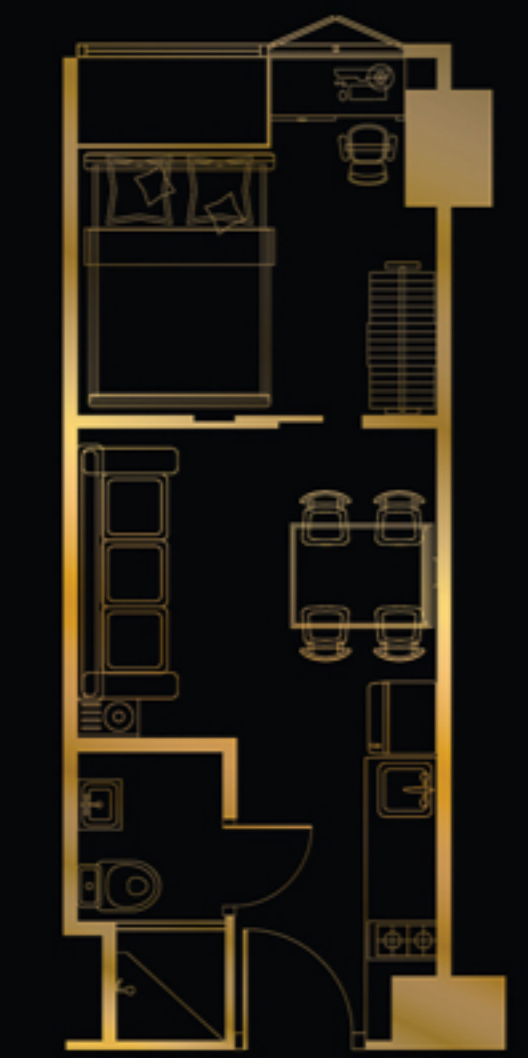
To make you feel like royalty, every unit is styled to suit your lifestyle, offering an option for you to combine units to revamp your space. Here, you can come home to luxury, thrive in an optimal setting, or celebrate your grandest dreams come true.

Dressed Up Unit, Artist's Perspective

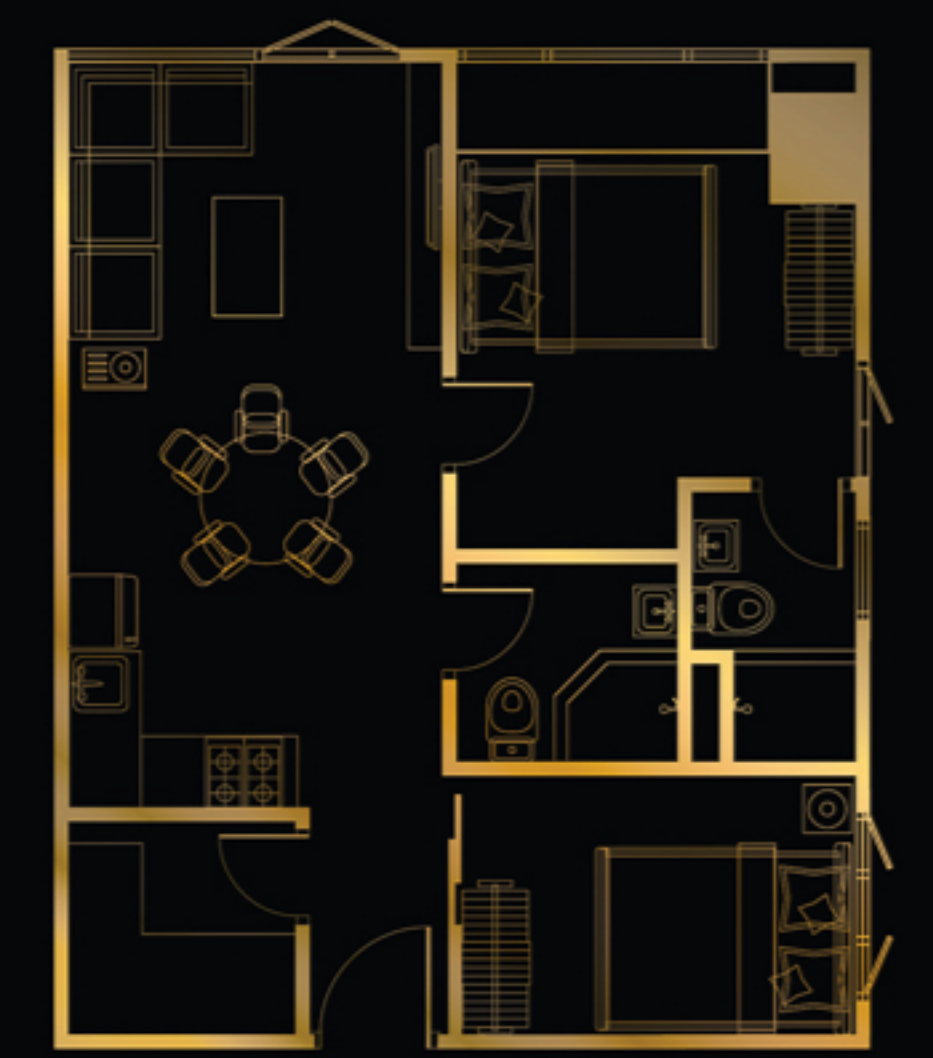


DESIGN-IT-YOURSELF

Make your place work for you and style it the way you want at Gold Residences. There's an abundance of units that await you; you can either personalize the spaces according to your liking or let the luxurious designs speak for itself.



One Bedroom Unit
Total ±25.42sqm



Two Bedroom Unit
Total ±54.53sqm

Dressed Up Unit, Artist's Perspective





CONSIDER IT DONE

Your dream of a prestigious life is made possible- and even above your standard. Committed to making the entire community feel secure and at ease, Gold Residences professional property management will assist you and cover all your needs—from handling your property requirements to securing your rental units. Should you decide to have your place rented, the team's leasing services will help you claim your pot of gold through a fast capital increase and significant rental yields.



SMDC

www.smdc.com

    TheOfficialSMDC

HLURB LS No. 035186 (Phase 1)

Ninoy Avenue Barangay Sto. Niño, Parañaque City

Completion: Sep. 30, 2024 (Phase 1) • Developer: Summerspring Development Corp.